

ScannerCare Cleaning Kit

RDM Part # 6000-6070

To Re-order:

Additional cleaning kits are available from the dealer you purchased your RDM check scanner



Contents:

- (12) RDM ScannerCare Cleaning Cards featuring Waffletechnology[®]
- (12) KICTeam Cleaning Wipes with SheerClean[™] cleaning agent

General Cleaning Procedures

- 1 Start an application (batch) which will feed documents through the scanner. *(If you have the RDM ScannerCare software, see instructions on the reverse side.)*
- 2 Insert the RDM ScannerCare Cleaning Card into the feeder section and run the cleaning card through the RDM scanner several times, rotating the card top to bottom on both sides. Cleaning frequency varies depending on the number of transactions made, but it is recommended to clean the scanner at least once per month.
- 3 Cancel the application and discard the used cleaning card.
- 4 Use the Cleaning Wipe to clean any dust or dirt from the exterior housing of the scanner.

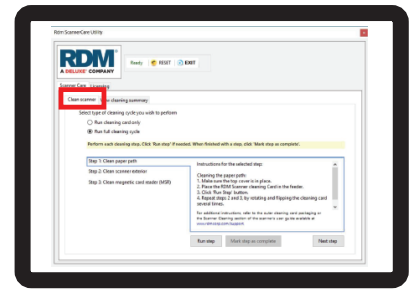
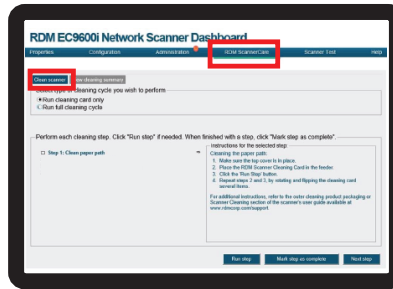
Cleaning Procedures

USING RDM SCANNERCARE SOFTWARE

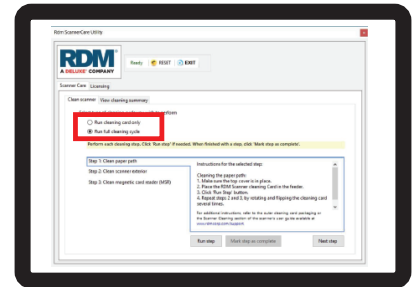
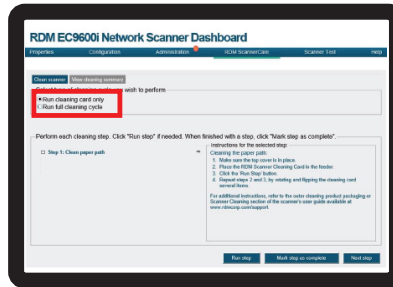
Network Version

Windows Version

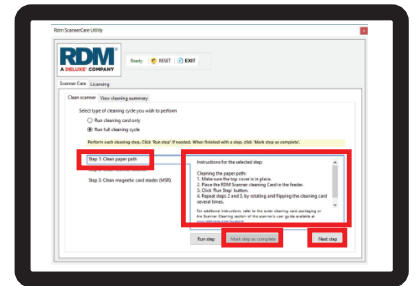
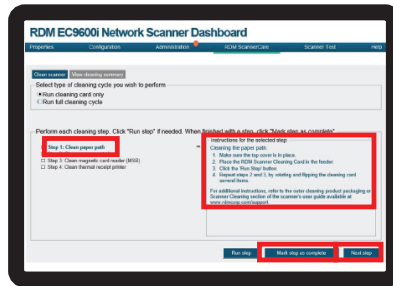
- 1 a. Run the RDM ScannerCare program.
b. Select the “RDM ScannerCare” tab and then the “Clean Scanner” sub-tab.



- 2 Choose to “Run cleaning card only” or “Run full cleaning cycle”.



- 3 Perform each step. Click on each step as needed, and follow the instructions.
 - a. Click the “Run step” button to begin the step.
 - b. When the step is completed, click the “Mark step as complete” button.
 - c. Click on either the next step, or the “Next Step” button to advance to the next step.
 - d. Continue until all steps are completed.



- 4 Select the “View cleaning summary” sub-tab. The summary shows various information related to each scanner cleaning step.

